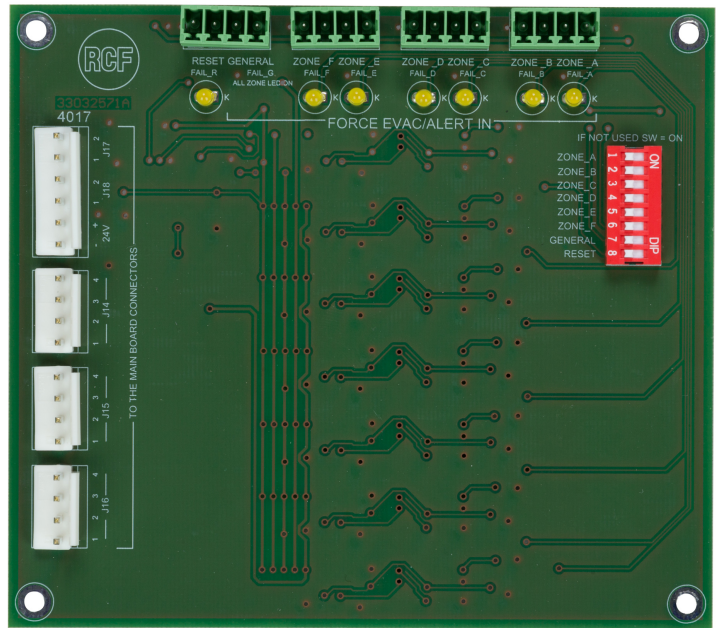


MG 3006

DXT 3000 MONITORED GPI BOARD

DESCRIPTION

MG 3006 is an additional monitored GPI board for DXT 3000 master units. It allows to monitor emergency system general purpose inputs (GPI), and detect (and report) any open line or short circuit along the path between DXT 3000 and other alarm devices, such as alarm buttons. MG 3006 is installed inside the master unit, and powered (24V) directly by the system.



FEATURES

- General purpose inputs monitoring
- Detection and reporting of any open line or short circuit
- General and single zone alarm activation
- Reset function

**TECHNICAL SPECIFICATIONS**

General specifications	Reset Function	Yes
	Alarm Activation	Yes

Standard compliance	CE marking:	Yes
----------------------------	-------------	-----

Size	Weight:	0.15 kg / 0.33 lbs
-------------	---------	--------------------

Shipping informations	Package Height:	80 mm / 3.15 inches
	Package Width:	210 mm / 8.27 inches
	Package Depth:	150 mm / 5.91 inches
	Package Weight:	0.23 kg / 0.51 lbs

PART NUMBER

- **13360344**

MG 3006

EAN 8024530013356