



NOVUS IP

IP VIDEO MONITORING SYSTEM





• Video stream visualisation

- Two independent video windows
- Simultaneous display of up to 72 streams (2 x 36 streams) with resolutions from VGA to 2MPX
- Any combinations of split screens, configurations and the number of displayed streams

Flexible graphical user interface

- Turning on/off, nesting, linking and hiding selected panels
- Personal settings and panel configurations defined individually for each user account
- Multi-screen operation using up to 4 monitors
- Intuitive operation with the possibility to set access restrictions to selected system resources

Device management •

- No limit for supported channels
- The number of cameras in the system correlated with the hardware platform performance
- Free of charge NMS software licence for NOVUS® IP devices (cameras and video servers)
- Client-Server software structure which enables to create expanded video monitoring systems with up to several hundred cameras

3 ways to control PTZ cameras

- From the on-screen PTZ control panel
- Using a PC mouse on the camera image
- Via the dedicated NMS keyboard (USB)



• Playback of recorded material

- Simultaneous live monitoring and playback of images from selected cameras, which guarantees the continuity of system supervision
- Remote playback of streams recorded on the server, using the NMS Client application
- Quick access to images from all cameras in the playback mode
- Simultaneous playback of images from up to 16 cameras in Full HD resolution

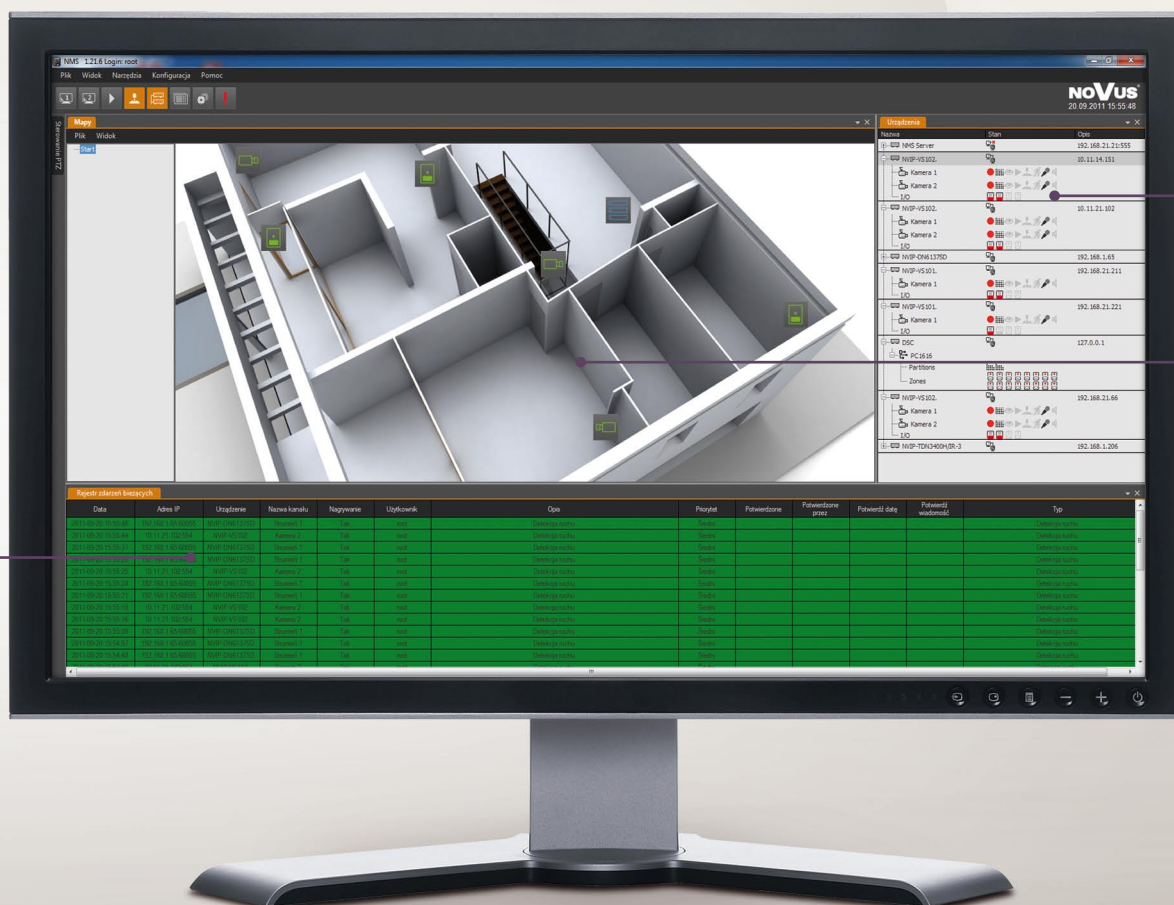
Playback panel •

- Graph illustrating stream recording modes with different colours (time-lapse, motion detection, alarm, combined or no recording)
- Graph scale adjustment, which enables precise hourly search of recordings within a day (with an accuracy of 1 frame)
- Adjustable display speed of recordings from 0.1x to 10x
- Playback from the event log level

• Rapid export of recordings

- Saving video materials from the local computer as well as from remote servers
- Choosing the size of recorded files





Module for multi-level interactive maps connected to each other by editable links

- Enables quick access to images from cameras through icons located on maps. The icons symbolize cameras and system elements, such as alarm detectors, contacts, sirens, etc. By clicking on the selected icon, the user can immediately see an image from the camera or activate building automation components. Additionally, the icons constantly inform about current events linked with each element (by colour change), ensuring rapid assessment of the situation in the monitored areas
- Easy camera identification and management, even in the case of a complex, expanded surveillance system with several dozen cameras located in different places of the object

Event monitoring module

- Constantly sends the operator current information about system events, which helps him react only in critical situations

Input/Output Panel

- Observation of the alarm inputs' status and remote change of the alarm output status (relay output)

operation



Recording configuration module

- Configuration of schedule recording individually for each stream and possibility to record video in different modes: time-lapse, motion detection or alarm. There is also an option to define specific days (holidays etc.)
- Allocation of the disc space individually for each stream and calculation of the estimated recording time which helps determine the potential size of the archive. Recording can be made onto HDDs built in the NMS server platforms and iSCSI or eSATA arrays

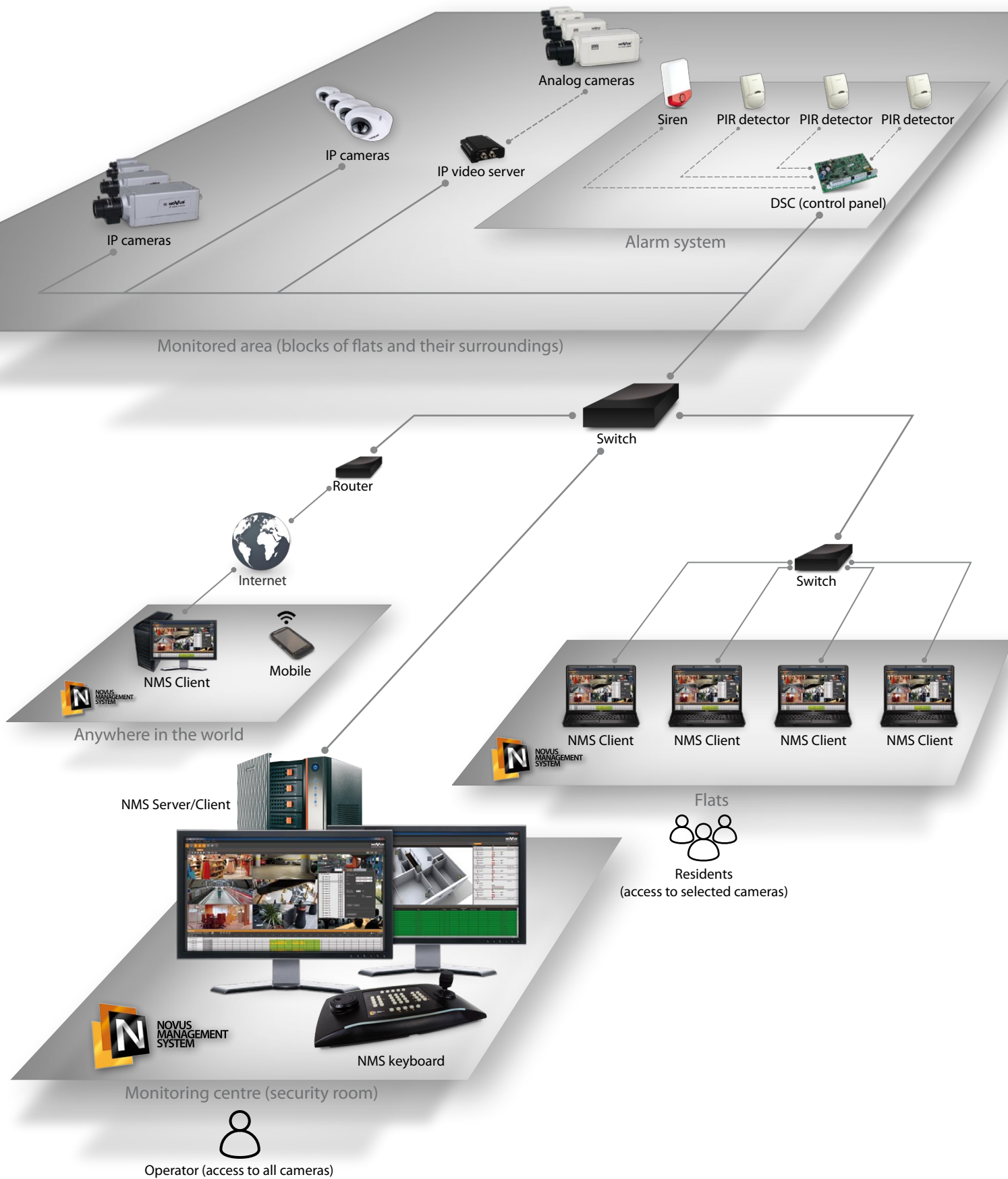
User grant configuration module

- Enables detailed definition of user access levels to device or application resources

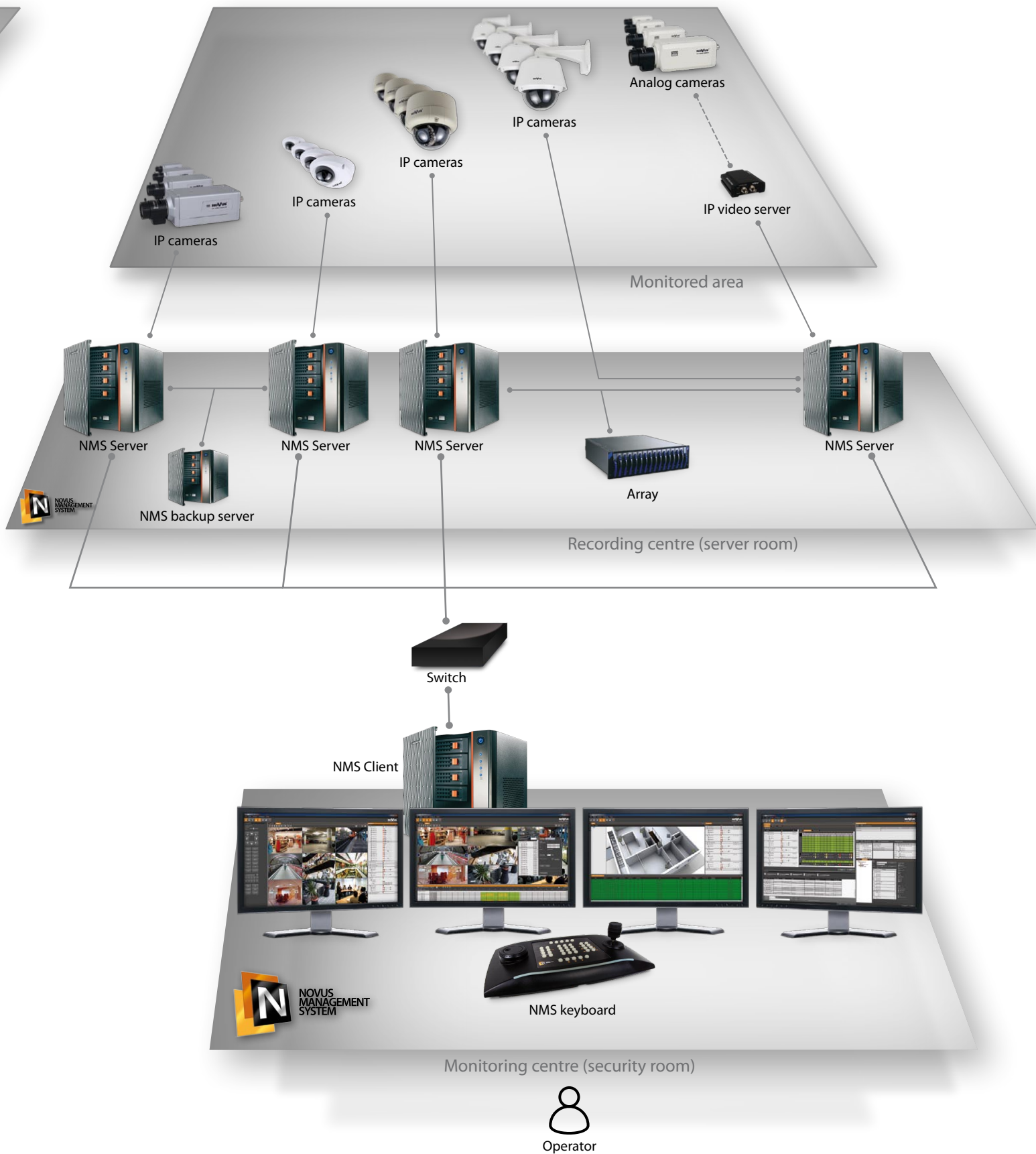
Event configuration module

- Advanced definition of scenarios of system reactions to alarm events (i.e. motion detection, alarm input activation) from cameras and from the intruder alarm system (DSC). Sample reactions: displaying a message, calling a PTZ function, sending an e-mail

SYSTEM SOLUTION EXAMPLE HOUSING ESTATE



SYSTEM SOLUTION EXAMPLE SHOPPING CENTRE





NOVUS IP, why?

A wide range of high-tech IP cameras

- Possibility to choose a camera best suited to the particular application, in terms of features, parameters as well as the available budget
- Resolution from 720 x 576 (D1) to 1920 x 1080 (Full HD) and frame rate from 10 to 30 fps at maximum resolution
- Large selection of camera types and styles: classic, dome, vandal proof, bullet
- Some models designed especially for bad weather conditions (IP66 and IP67) and low light or no light applications (built-in IR LED)
- Speed dome cameras available (including a megapixel model)

All NOVUS® IP cameras are fully compatible with NMS (Novus Management System) software

as well as an efficient and reliable recording system



- Enables to create expanded monitoring systems without inconvenient licence restrictions on the number of connected devices
- Software administration and PTZ cameras' control both from the application level and using the keyboard with joystick
- Multi-screen operation capability and flexible, intuitive interface with a possibility to create own working panels' configurations
- Fully configurable multi-level maps and easy switching between views
- Creation of advanced event scenarios and possibility to link input actions such as alarm, motion detection or other system events with output events configurable by the user
- Possibility to integrate the CCTV system with any DSC intruder alarm system, which greatly simplifies the administration of a complex building management system (BMS)

NMS software is provided with all NOVUS® IP devices without additional charges