

PMD2 Plus

ENHANCED WALK-THROUGH MULTI-ZONE METAL DETECTOR

- Superior Detection and Throughput
- Very High Discrimination of Non-Threat Items
- Compliant with the strictest Security Standards for weapons detection
- 60 localization zones: • 20 vertical • 3 lateral
- Column and Panel versions
- Unmatched Reliability
- Rapid Installation



PMD2 PLUS PANEL VERSION



PMD2 PLUS ELLIPTIC VERSION

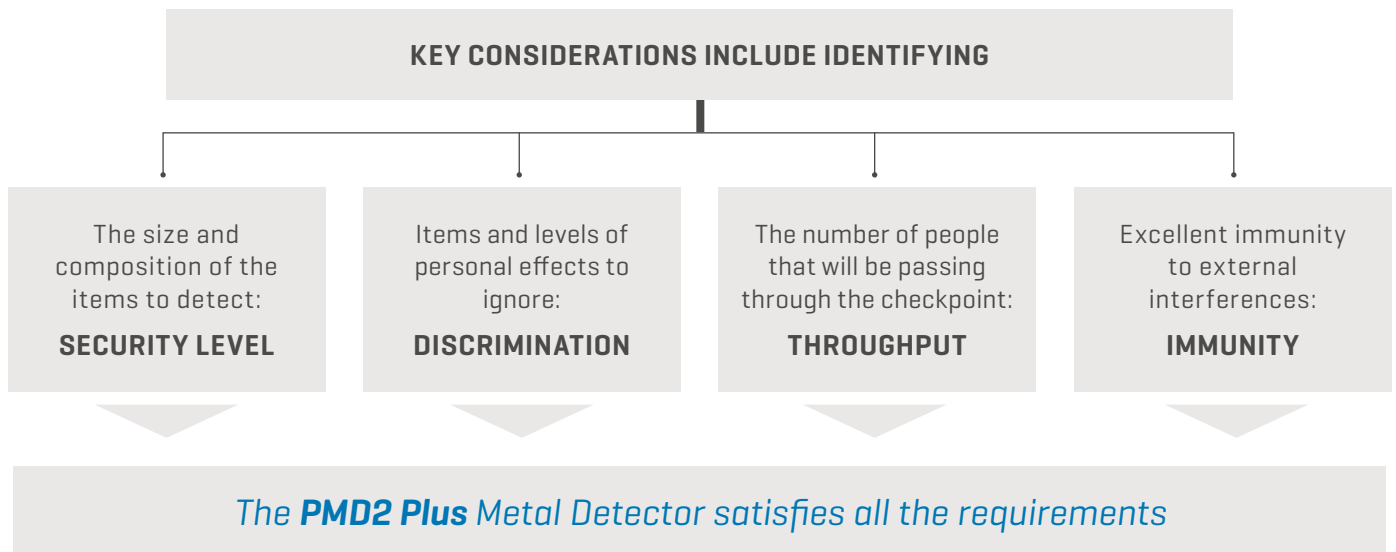


www.ceia.net



Threat Detection through Electromagnetics

Strict requirements and detection needs call for security checkpoints to perform efficiently even under very challenging conditions. Choosing the right metal detector is essential.



DETECTION FEATURES

- Capability to detect the full range of metal weapon threats even within body cavities

The most advanced Security Standards require **detection of all ferrous and non-ferrous metal weapons and of those constructed in special non-magnetic alloys**. The *PMD2 Plus* detects firearms and knives of this type, even when they are hidden within body cavities, and accurately indicates the position of the threat, its intensity and its prevalent composition. Inspection personnel thereby acquire thorough knowledge of the metal item and can act, according to procedures, with maximum effectiveness and security.

MET-IDENTITY TECHNOLOGY

With Met-Identity technology, the *PMD2 Plus* allows you to know where, how much and what type of metal is being brought into the secure area.

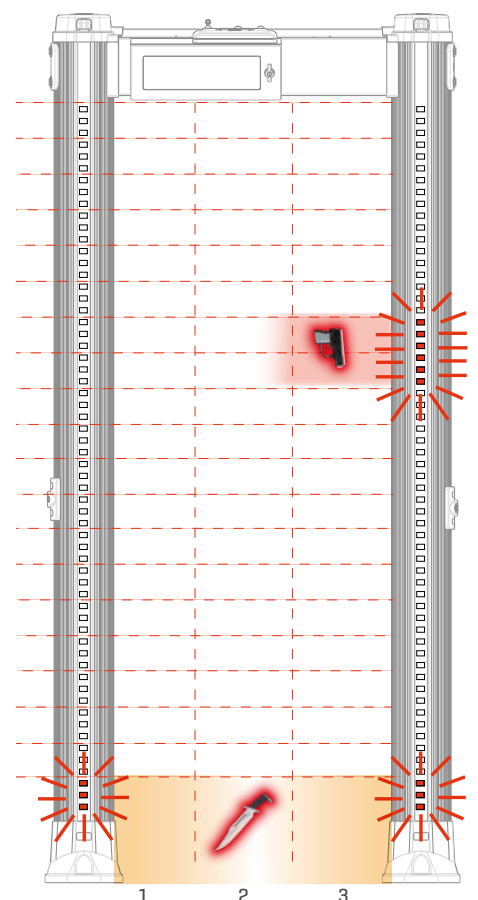
Ferr **no Fe**

► FERROUS METAL

► NON FERROUS METAL



HIGH RESOLUTION
AND PRECISION



60 LOCALIZATION ZONES WITH LEFT, CENTER AND RIGHT INDICATION

UNIQUE ALARM SIGNALLING



PROGRAMMABLE
DISPLAY BARS

- High visibility of the control unit and the zone indication independent from the operator position and the installation environment

Accurate signaling is essential for best operation and flow management. **The PMD2 Plus provides the user with fully-programmable signaling.** Both entry-points can indicate with a high level of accuracy, even simultaneously, the vertical and lateral areas of transit of the threats detected, and can also be configured as 'traffic lights' to control transits through the detector.

- Flexible Acoustic Alarm Signaling System:

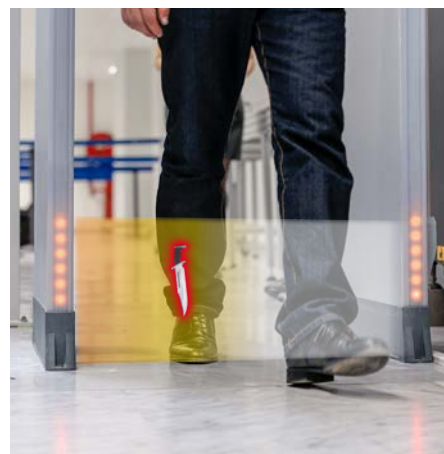
✓ 10 Continuous and Pulsed Tones ✓ 34 Special Sounds



INTENSITY
LEVELS

- 10 Alarm Volume Levels
- Very High Precision Transit Counter:

✓ In-Bound Transits ✓ Out-Bound Transits ✓ Alarm Rate
✓ Automatic Compensation for repeated transits of the same person



4 MULTI-ZONE DISPLAY BARS

Light bars indicate metal position vertically and laterally and can also show pacing lights.

UNMATCHED THROUGHPUT



- Cutting-edge discrimination technology allows personal effects to be ignored, creating rapid transit flow



MOST POWERFUL AND VERSATILE SECURITY FEATURES



Up to 50 built-in Security Programs

- Up to 30 International Standards
- Up to 20 Customizable Levels

Setting the Security Levels could not be easier and more versatile than in the *PMD2 Plus*. Users can choose directly from the known International Standards or request implementation of a Standard personalized to their own requirements. Users can also create their own work program and save it in internal memory provided for the purpose.



Chip Card system for fast, simple and secure parameter changes [i.e. alarm volume and tone, counter reading, etc...] and security level selection

One unique characteristic of the CEIA metal detectors is the chip-card system, which allows Security Management to set the Security Level quickly, reliably and without having to program the device in any way.

- Any security standard can be enhanced with selectable random alarm probability

RAPID INSTALLATION



One touch guided automatic installation [OTS]

Innovative function assisting the installation through an automatic step-by-step procedure

- Continuous self diagnostics assures monitored performance reliability

COMMUNICATION CAPABILITIES

TYPE OF OPERATION	ETHERNET	USB	INFRARED	BLUETOOTH	RS-232
Maintenance	o	o		•	•
Remote Control	o		•	•	•
Remote Data collection	o				
STANDARD • OPTION o					

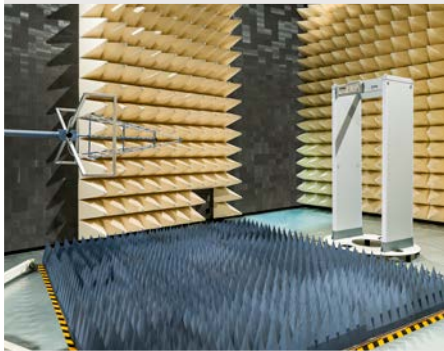
CHIP CARD SYSTEM

The system allows the Head of Security to set the Security Level quickly, reliably and without having to program the device in any way.



IMMUNITY

Exceptional immunity to environmental interferences makes the Metal Detector easy to use even when electrical noise is encountered.



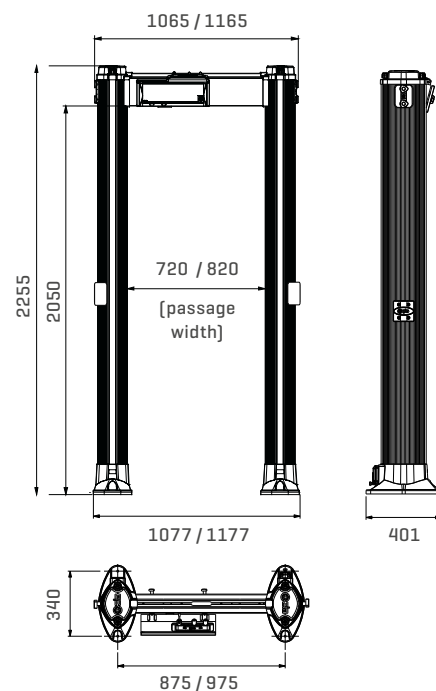
MODEL SELECTION

FEATURES	PMD2 Plus/EZ	PMD2 Plus/PZ
GATE - SHAPE	ELLIPTIC COLUMN	PANEL
Compliant with the strictest detection and discrimination standards for EMDs [Enhanced Metal Detectors]	•	•
4 display bars each programmable as zone indicators and/or pacing lights	•	•
60 localization zones with left, center and right indication	•	•
Specific Shoe Alarm color indication	•	•
Chip Card Reader	•	•
Bluetooth, infrared and RS-232 communication	•	•
3-Level Password and hardware key access protection	•	•
Met-Identity technology [separate Ferrous and Non-Ferrous alarm signaling]	•	•
One Touch Automatic Self Installation [OTS]	•	•
Automatic Operational Functional Verification [OFV]	•	•
Automatic Vibration Compensation [AVS, EVA]	•	•
Automatic Channel Search [CS]	•	•
Automatic Floor Gain Adjustment [FGA]	•	•
Automatic Technical Functional Verification [TFV]	•	•
Automatic Environmental Noise Compensation [ENA]	•	•
Powered by safe low voltage DC	•	•
Anti-tamper on/off switch	•	•
High precision transit counter	○	•
Programmable Random Alarm capability*	○	•
Integrated web-server & logger [includes Ethernet and USB interface]	○	○
Weather resistant protection	○	○
Anti-vandalism, anti-tampering protection [with IP65 control unit]	○	○
IP65 protection [IP65 control unit, IP68 power supply adapter, anti-vandalism protections, weatherproof gate structure, compliant with IEC 60950-22]	○	○
Embedded battery charger and under-voltage protection	-	○
Long life crossbar battery back-up	-	○
820 mm useful passage width	○	○

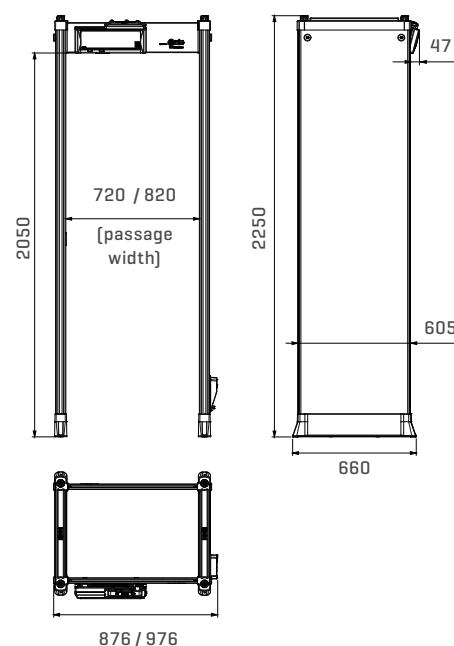
STANDARD • OPTION ○ *Transit Counter required

DIMENSIONS [mm]

ELLIPTIC COLUMN



PANEL



OPTIONS / UPGRADE KITS

► WEATHER RESISTANT PROTECTION

Kit for upgrading the standard version to outdoor applications according to IEC 60950-22; this kit includes shelters, crossbars, protection covers for power supply and IP68 mains power supply adapter.

PANEL

- 720 mm passage width (part # 55630)
- 820 mm passage width (part # 55633)

ELLIPTIC

- 720 mm passage width (part # 55657)
- 820 mm passage width (part # 55658)



► ANTI-VANDALISM, ANTI-TAMPERING PROTECTION

This option includes stainless steel control unit, IP68 mains power supply adapter, protection covers for power supply and antenna connection compartments, equipped with screws requiring tools for removal.

PANEL: part # 55629 ELLIPTIC: part # 55659



► IP65 PROTECTION

This option includes the Weather Resistant and Anti-vandalism kits.

PANEL

- 720 mm passage width (part # 55631)
- 820 mm passage width (part # 55632)

ELLIPTIC

- 720 mm passage width (part # 55660)
- 820 mm passage width (part # 55661)

► EMBEDDED BATTERY BACK-UP AND CHARGER

Anti-tamper on/off switch, RS-232 interface, 35 minutes typical (25 minutes minimum) internal battery back-up with 12 hours mains disconnection diagnostic alarm.

PANEL: part # APSM2Plus/P



► 820 mm USEFUL PASSAGE WIDTH

PANEL: part # 55635 ELLIPTIC: part # 55664

► HIGH PRECISION TRANSIT COUNTER

Two photocells fitted into the archway allow counting of transits, alarms and percentage of alarms. Panel versions are already equipped with transit counter.

ELLIPTIC: part # 46982



► INTEGRATED WEB-SERVER & LOGGER, BATTERY BACK-UP AND CHARGER

Anti-tamper on/off switch, RS-232, USB, 10/100 baseT Ethernet interface, data logger, real-time clock, integrated web-server, transit statistical data analysis, 20' internal battery back-up with 12 hours mains disconnection diagnostic alarm.

PANEL: part # APSiM2Plus/P



► CROSSBAR BATTERY BACK-UP

- 8 hours typical of autonomous working time

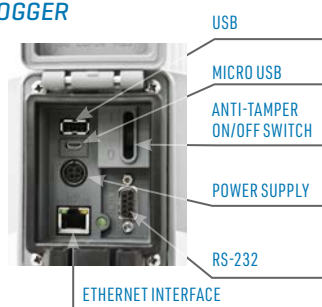
PANEL: part # 55681



► INTEGRATED WEB-SERVER & LOGGER

Anti-tamper on/off switch, RS-232, USB, 10/100 baseT Ethernet interface, data logger, real-time clock, integrated web-server, statistical transit data analysis.

ELLIPTIC: part # APSiM2Plus/E



ACCESSORIES

► CHIP CARDS

Chip cards for simple and secure selection of Security Levels and parameter setting. List of chip-cards available on request.

► MBSU-2

Independent, compact size, long life power supply in weatherproof stainless steel case, with embedded fast charger:

- 14 hours typical continuous operation
- 7 hours typical charging time.

Part # MBSU-2



► IRC-1

Infrared Remote Controller for wireless remote programming of the control unit. Part # 47180



► UPPER CONNECTION MODULE

This extension cable allows the connection of power supply and serial communication to personal computers or CEIA accessories, such as RCU-2. Part # 46650

► RRU

Remote relay unit (RRU) to repeat the detection alarms of the gate through a relay contact. The RRU module can be used for integration of the Metal Detector in interlocked door systems. Part # RRU

► WATERPROOF MAINS POWER SUPPLY

IP68 power supply for outdoor applications. It is provided with flanges for simple installation. Part # 64609

► METAL DETECTOR DIVESTING TABLE

In combination with CEIA Walk-Through Metal Detectors, it is a temporary location of personal metal effects for people to be screened.

- Standard length: 610 mm (part # 18074)
- Extended length: 1200 mm (part # 39491)
- Outdoor version: 1300 mm (part # 67021)



► TOOL-FREE ASSEMBLY KIT (ELLIPTIC VERSION)

This accessory allows the detector to be assembled and disassembled quickly and without tools.

Part # 55699



► RCU2

Control unit for full remote access, including alarm signalling and programming of CEIA Metal Detectors. Part # RCU2



► MD-SCOPE

Powerful, PC based installation and service Software. Includes oscilloscope and terminal functionality.

Part # MD-SCOPE2



► STABILIZING PLATES (ELLIPTIC VERSION)

Comfortable alternative to direct floor mounting for uneven floor and mobile applications:

- Standard version (part # 46705)
- Plastic stabilizing plates (part # 46938)
- Anti-tilting metal plates (part # 70914)

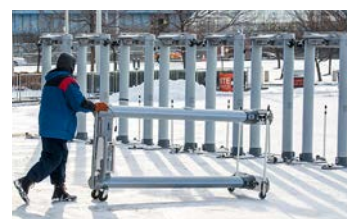


► WHEEL KIT - LONG RANGE

For heavy duty, longer range movement of the walk-through metal detectors

ELLIPTIC: part # 70569

PANEL: part # 70796



► WHEEL KIT - SHORT RANGE

For short range movement of the walk-through metal detectors

ELLIPTIC: part # 77318

PANEL: part # 75459



► TEST SAMPLES KIT

Reference Samples for accurate verification of the Security Level. Includes guided procedures and certificate of calibration.

Part # EMD-SK-GAL

Part # EMD-SK-GDML



SPECIFICATIONS

KEY FEATURES

Wide range of threat detection from guns to 1/2 cutter blade
Excellent discrimination of personal metal effects
60 localization zones (20 vertical x 3 lateral) with left, center and right indication
Met-Identity technology identifies and signals the metal type in real time
High precision bidirectional counter with automatic rescreening compensation
Random alarm capability programmable from 0% to 100%
Exceptional Immunity to external interferences
Standard Interfaces: Bluetooth, Infrared
Other available interfaces: Ethernet, USB

QUALITY

Continuous self diagnostic system
Proven reliability
No periodic re-calibration and preventive maintenance required
No scheduled maintenance
Fully digital design

GATE STRUCTURE

State-of-the-art, robust and washable panels or compact elliptical columns
Protected against aging, weather and wear

CENTRAL CONTROL UNIT

Ergonomic and robust design
High visibility alphanumeric display and programming keyboard
Made of advanced plastics or stainless steel and anti-vandalism construction (option)
Access to the front panel protected by hardware key and 3 levels of passwords

ALARM SIGNALING

VISUAL SIGNALS Multi-zone display bar for "height on person" localization
4 light bars with selectable entry/exit and pacing indication
Green and red metering signals proportional to the mass of the detected target
AUDIO SIGNALS 10 selectable continuous and pulsed tone plus 34 special tones
10 selectable sound intensities ranging from 0 to 90 dbA at 1m

TYPE OF SIGNALING

VISUAL Fixed or proportional to the mass in transit - visible from 6m under lighting of 4000lux
VISUAL ZONE INDICATION 60 distinct zones (20 vertical x 3 lateral) entry and exit side

PROGRAMMING

Up to 50 built-in Security Programs
Remote via Infrared Remote Control Unit, Bluetooth™ or Ethernet 10/100 base T (option) interface
SECURITY LEVEL International Standard (IS) command
Chip card
Local by Control Unit alphanumeric display and keyboard
Programming and chip card access protected by user and super-user passwords

OPERATIONAL FEATURES

High discrimination and transit flow rates five or more times greater than other metal detection systems
Quick reset time as short as 0.2 seconds for high throughput rate
Very high detection speed (up to 15 m/sec.)
Built-in operational functional verification
One-touch key reading of inbound, outbound and Security Level Data

INSTALLATION DATA

Automatic synchronisation between two or more metal detectors with distance of down to 5 cm without the use of external cables
Automatic Installation function (OTS)

APPLICATIONS

- ✓ GOVERNMENT BUILDINGS
- ✓ AIRPORTS
- ✓ INDUSTRIES (SECURITY)
- ✓ NUCLEAR FACILITIES (SECURITY)
- ✓ PRISONS (VISITORS)
- ✓ PUBLIC EVENTS
- ✓ AMUSEMENT PARKS
- ✓ COURTS
- ✓ CRUISE SHIPS
- ✓ DATA PROCESSING CENTERS (EDP)
- ✓ HOTELS
- ✓ SCHOOLS SECURITY

ENVIRONMENTAL DATA

- POWER SUPPLY : 100...277V~ ±10%, 47...63Hz, 40 VA typical consumption
- OPERATING TEMPERATURE: -20°C to +65°C (-37°C to +70°C upon request)
- STORAGE TEMPERATURE: -37°C to +70°C
- RELATIVE HUMIDITY: 0 to 95% (without condensation)

CERTIFICATION AND COMPLIANCE

- Compliant with and certified to the applicable Standards for Enhanced Metal Detectors (EMD)
- Compliant with the applicable electromagnetic Standards on Human Exposure and Pacemaker Safety
- Compliant with all Airport Security Standards worldwide
- Compliant with applicable International Standards for electrical safety and EMC
- Harmless to magnetic media (CD, tapes, etc.)

COMPREHENSIVE SUPPORT

- CEIA PROVIDES FULL OPERATIONAL AND TECHNICAL TRAINING SUPPORT BY CERTIFIED PERSONNEL EITHER AT CEIA FACILITY OR AT CUSTOMER LOCATION



CEIA - Zona Industriale 54, 52041 Vicinaggio - Arezzo [ITALY]
T +39 0575 4181 • F +39 0575 418298 • E infosecurity@ceia-spa.com

www.ceia.net

